

Clozapine 1301 1

1301

**Clozapine** 24 1301<sup>1</sup>

■

24

■

1. DSM-IV
2. 2 4mg/6 24mg/6 15mg/6 400mg/6 GAF 41
3. 18 65
- 4.
5. Visit1 BPRS 45
- 6.

■

■



## 2. Clinical Global Impression of Change (CGI-C)

CGI-C is a 7-point scale used to assess the change in a patient's clinical status. The scale ranges from 1 (Very much improved) to 7 (Very much worse). The categories are: 1. Very much improved, 2. Much improved, 3. Minimally improved, 4. No change, 5. Minimally worse, 6. Much worse, 7. Very much worse.

## 3. Clinical Global Impression of Severity (CGI-S)

CGI-S is a 7-point scale used to assess the severity of a patient's clinical condition. The scale ranges from 1 (Normal, not at all ill) to 7 (Among the most extremely ill patients). The categories are: 1. Normal, not at all ill, 2. Borderline mentally ill, 3. Mildly ill, 4. Moderately ill, 5. Markedly ill, 6. Severely ill, 7. Among the most extremely ill patients.

CGI-S is a 7-point scale used to assess the severity of a patient's clinical condition. The scale ranges from 1 (Normal, not at all ill) to 7 (Among the most extremely ill patients). The categories are: 1. Normal, not at all ill, 2. Borderline mentally ill, 3. Mildly ill, 4. Moderately ill, 5. Markedly ill, 6. Severely ill, 7. Among the most extremely ill patients. The scale is used to assess the severity of a patient's clinical condition. The scale is used to assess the severity of a patient's clinical condition. The scale is used to assess the severity of a patient's clinical condition.

CGI-C

- DIEPSS (Drug Induced Extra-Pyramidal Symptoms Scale)
- CGI-C

### ■ CGI-C

BPRS (Brief Psychiatric Rating Scale) is a 18-item scale used to assess the severity of a patient's clinical condition. The scale ranges from 0 to 54. The scale is used to assess the severity of a patient's clinical condition. The scale is used to assess the severity of a patient's clinical condition. The scale is used to assess the severity of a patient's clinical condition.

### ■ CGI-S

BPRS (Brief Psychiatric Rating Scale) is a 18-item scale used to assess the severity of a patient's clinical condition. The scale ranges from 0 to 54. The scale is used to assess the severity of a patient's clinical condition. The scale is used to assess the severity of a patient's clinical condition. The scale is used to assess the severity of a patient's clinical condition.

### ■ CGI-C

Image



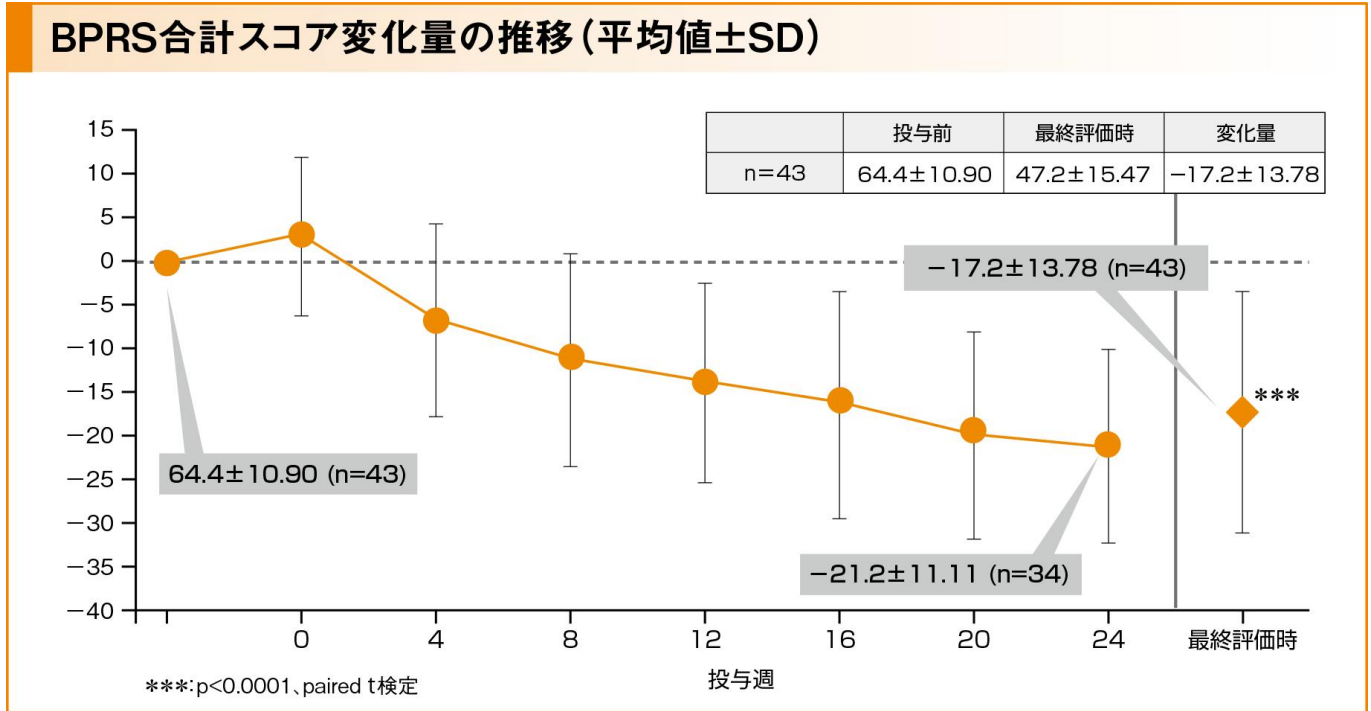
〇〇〇〇〇〇〇 **BPRS** 〇〇〇〇〇〇〇〇〇〇〇〇

BPRS 〇〇〇〇〇〇〇〇〇〇〇 64.4±10.90 〇〇〇〇 ± 〇〇〇〇〇〇〇〇〇〇〇 4 〇〇〇〇 24 〇〇〇〇〇〇〇〇〇〇〇〇〇 12 〇〇

〇 -14.0±11.33 〇〇 24 〇〇〇 -21.2±11.11 〇〇〇〇〇〇〇〇〇〇〇〇〇〇〇 47.2±15.47 〇〇〇〇〇〇 -17.2±13.78 〇〇〇〇〇〇〇

〇〇〇〇〇〇〇〇〇〇〇〇〇〇〇 p<0.0001 〇 paired t 〇〇〇〇〇〇〇〇〇〇〇〇 LOCf 〇〇〇〇〇〇〇〇〇〇

Image



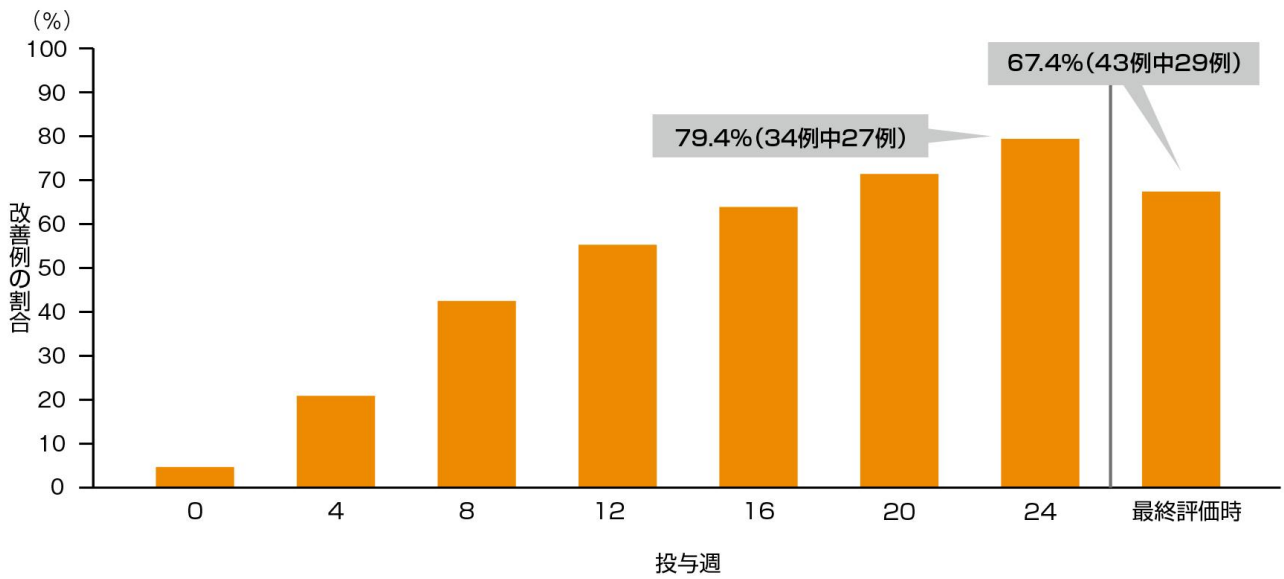
〇〇〇〇〇〇〇 **BPRS** 〇〇〇〇〇 20 〇〇〇〇〇〇〇〇〇〇〇〇

BPRS 〇〇〇〇〇〇〇〇〇 〇 〇〇〇 4 〇〇〇〇 9 〇〇〇〇〇〇〇 24 〇〇〇〇〇〇〇〇〇〇 12 〇〇〇 21 〇〇 55.3% 〇〇〇〇 24 〇〇〇 27 〇〇 79.4% 〇〇〇〇

〇〇〇〇 29 〇〇 67.4% 〇〇〇〇〇

Image

## BPRS合計スコア20%以上の改善例の割合

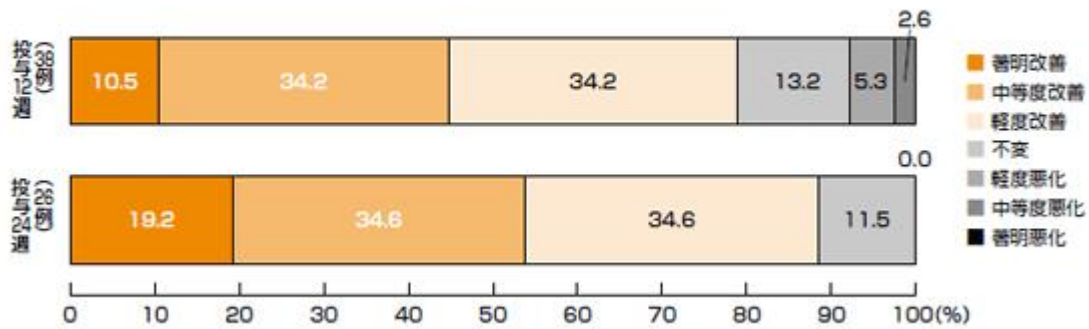


### CGI-C

CGI-Cは、12週時点で38例(17%)が44.7%、24週時点で38例(3)が7.9%、最終評価時26例(14)が53.8%の改善を認めた。

### Image

#### CGI-C評価 (看護師)



### CGI-S

BPRSスコアは、12週時点で14例(8)が57.1%、10例(7)が71.4%、7例(5)が50.0%の改善を認めた。24週時点で14例(3)が21.4%、4例(2)が28.6%、2例(1)が14.3%の改善を認めた。最終評価時4例(3)が50.0%の改善を認めた。

### Image

