

Novartis NEN 100 mg capsules

Novartis **NEN** 100 mg capsules

Novartis NEN 100 mg capsules

Novartis **NEN** 100 mg capsules

Novartis

Novartis NEN 100 mg capsules 100 mg capsules
Novartis **C** capsules 24, 72, 80, 48, 90, 72, 100 mg capsules
Novartis 24, 80, 48, 90, 72, 100 mg capsules
Novartis **C** capsules 30 mg capsules **C** capsules
Novartis 2U/kg 20 mg capsules 2 mg capsules 10 µU/mL
Novartis **B** capsules **B** capsules
Novartis **B** capsules
Novartis **CT** **EUS** **US**
Novartis **SASI Test**

Novartis

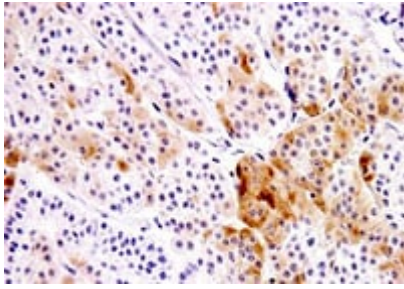
Novartis 1 mg capsules 24
pH 60 pg/mL
Novartis 30 mg capsules
Novartis 100 mg capsules

Novartis

Novartis
Novartis

VIP capsules

Novartis **VIP** capsules



NETs

1 NETs

	NETs	NETs
NETs ^{1,2}	<ul style="list-style-type: none"> • 92% 51% • 38% • 43% 23% 	NIPHS
Zollinger-Ellison NETs ^{1,2}	<ul style="list-style-type: none"> • 26 98 • 0 56 • 71 93 • 17 73 • 8 75 	G
NETs ^{1,2}	<ul style="list-style-type: none"> • 22 90 • 14 18 • 54 90 	
VIP WDHA NETs ^{1,2}	<ul style="list-style-type: none"> • 89 100 • 67 100 • 44 100 • 14 33 	
NETs ^{1,3}	<ul style="list-style-type: none"> • 58 100% • 45 96% • 3 18% • 14 41% 	

NIPHS: non-insulinoma pancreatogenous hypoglycemia syndrome, WDHA: watery diarrhea hypokalemia achlorhydria

1 Ito T, Jensen R. Expert Opin Pharmacother. 2021; 22: 685-693.

2 . 2014; 111: 2263-2271.

3 Khan MS, et al. World J Gastroenterol. 2020; 26: 4537-4556.

NETs

. NETs, 2011

